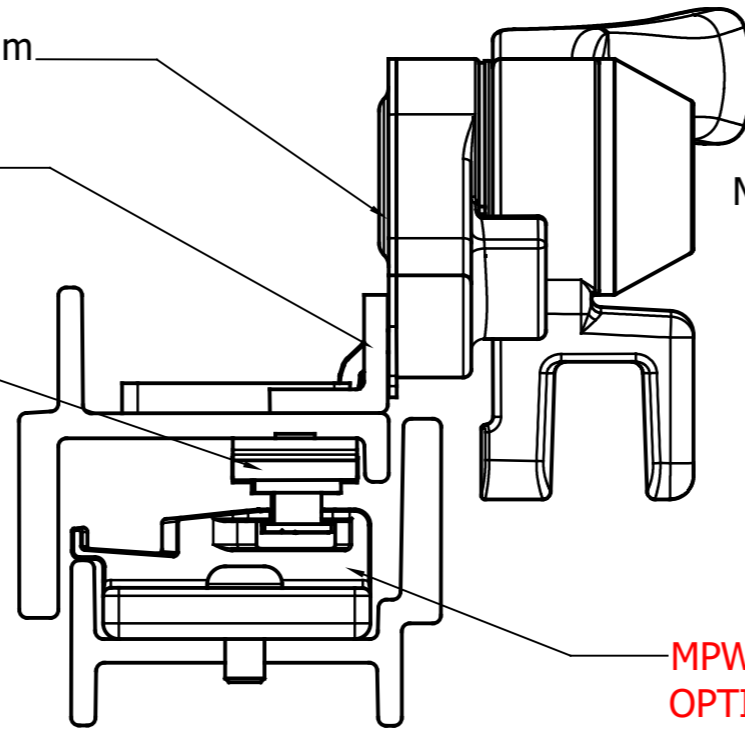


MP158SPC10** - MULTIPOINT HANDLE SPACER 1mm

MPW40HFB - (M)W40 HANDLE FIXING BRACKET

MPRW20/24 - MULTIPOINT RAIL

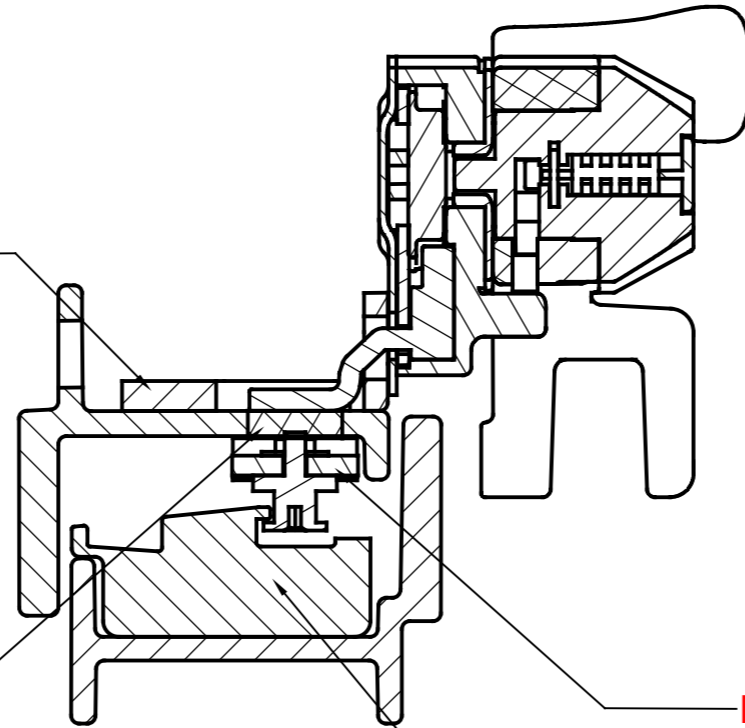
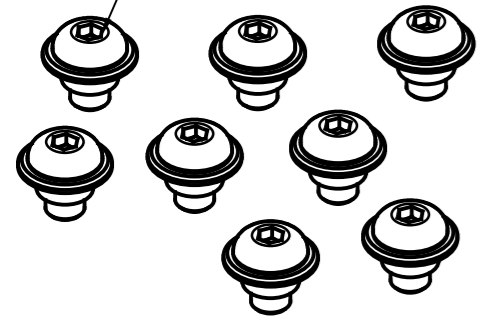
MULTIPOINT HANDLE "BC" IN CODE



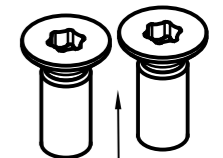
MPW40KP - KEEP (4)
OPTION - (MPW40KP05NA - KEEP PACKER)

MP05RETSTD - RETAINER AND SCREW

MPW40DP - DRIVE PLATE



M514CSKTX - M5 x 14mm TX25 COUNTERSINK SCREW
TO FIX CENTRE MUSHROOM




MPW40CM - CENTRE MUSHROOM ASSEMBLY

MPW40DPS - DRIVEPLATE SPACER

OPTION - (MPW40DPSS05 - DRIVE PLATE SPACER SHIM)

MPW40KPCM - CENTRE MUSHROOM KEEP (1)
OPTION - (MPW40KP05NA - KEEP PACKER)



Issue 1	Date 28/01/2020	Material	Finish	 Scale @ A3 1:1
Designed By terry	Checked By	Part No.		
Description MW40 MULTIPOINT OPEN OUT GLAZE IN				Sheet 1 / 1

MP158SPC10** - MULTIPOINT HANDLE SPACER 1mm

MULTIPOINT HANDLE "BC" IN CODE

MPRW20/24 - MULTIPOINT RAIL

MPW40KP - KEEP (4)
OPTION - (MPW40KP05NA - KEEP PACKER)

MP05RETSTD - RETAINER AND SCREW

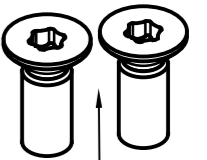
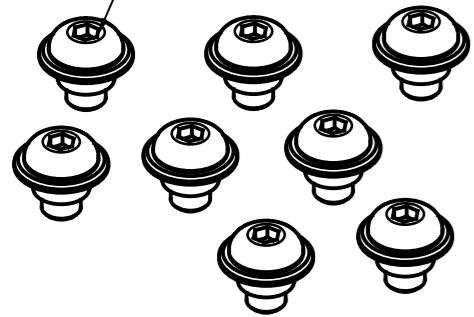
MPW40DP - DRIVE PLATE

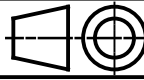
M514CSKTX - M5 x 14mm TX25 COUNTERSINK SCREW
TO FIX CENTRE MUSHROOM

MPW40CM - CENTRE MUSHROOM ASSEMBLY

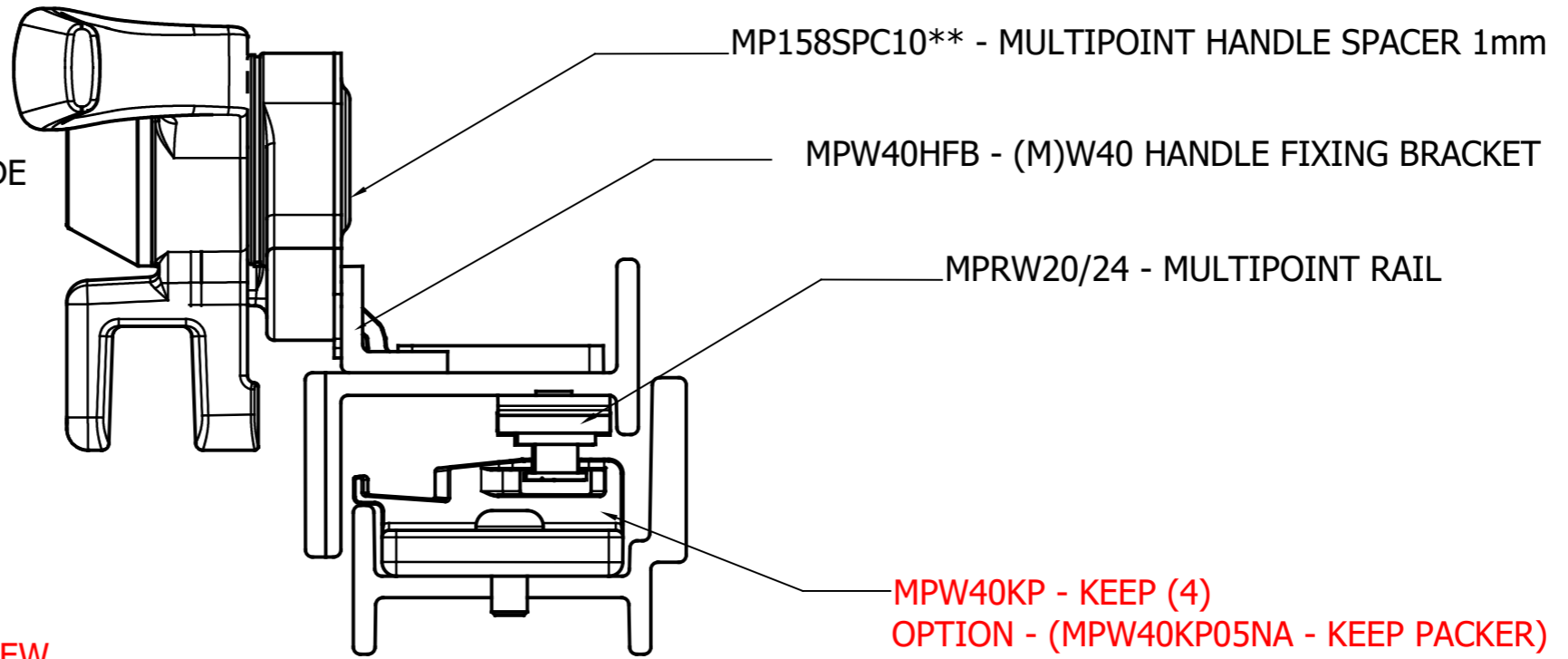
MPW40DPS - DRIVEPLATE SPACER
OPTION - (MPW40DPSS05 - DRIVE PLATE SPACER SHIM)

MPW40KPCM - CENTRE MUSHROOM KEEP (1)
OPTION - (MPW40KP05NA - KEEP PACKER)



Issue 1	Date 28/01/2020	Material	Finish	 Scale @ A3 1:1
Designed By terry	Checked By	Part No.		
Description MW40 MULTIPOINT OPEN OUT GLAZE OUT			Sheet 1 / 1	

MULTIPOINT HANDLE "BC" IN CODE



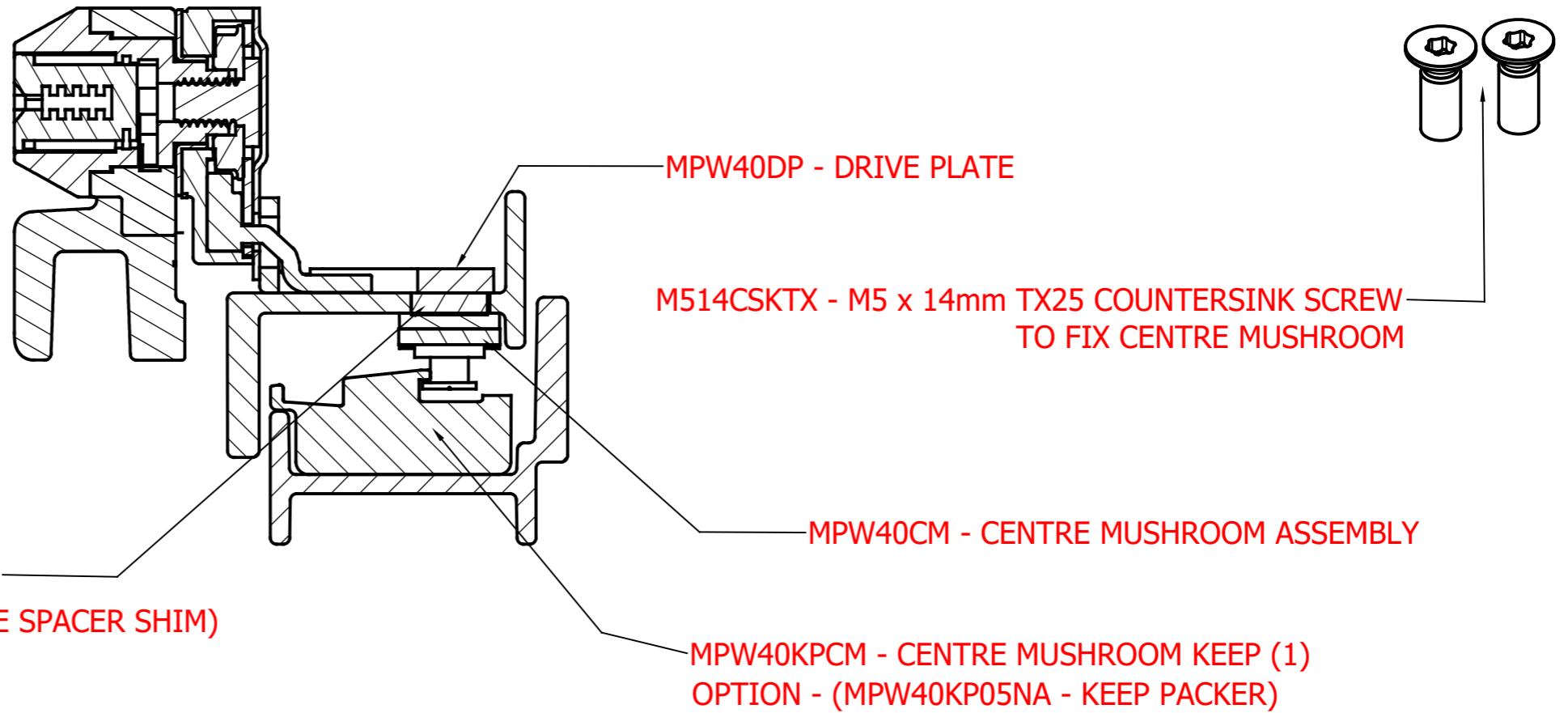
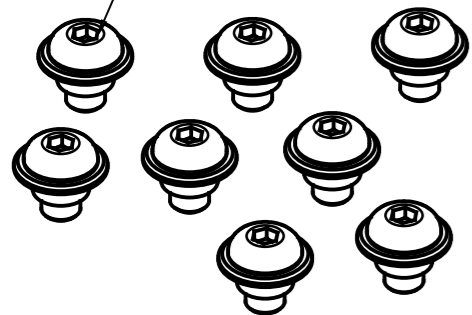
MP158SPC10** - MULTIPOINT HANDLE SPACER 1mm

MPW40HFB - (M)W40 HANDLE FIXING BRACKET

MPRW20/24 - MULTIPOINT RAIL

MPW40KP - KEEP (4)
OPTION - (MPW40KP05NA - KEEP PACKER)

MP05RETSTD - RETAINER AND SCREW



MPW40DP - DRIVE PLATE

M514CSKTX - M5 x 14mm TX25 COUNTERSINK SCREW
TO FIX CENTRE MUSHROOM

MPW40CM - CENTRE MUSHROOM ASSEMBLY

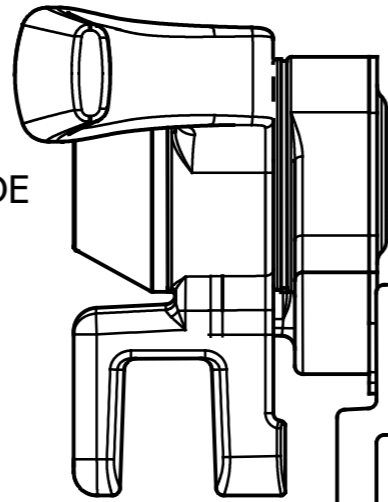
MPW40DPS - DRIVEPLATE SPACER
OPTION - (MPW40DPSS05 - DRIVE PLATE SPACER SHIM)

MPW40KPCM - CENTRE MUSHROOM KEEP (1)
OPTION - (MPW40KP05NA - KEEP PACKER)



Issue 1	Date 28/01/2020	Material	Finish	
Designed By terry	Checked By	Part No.		
Description MW40 MULTIPOINT OPEN IN GLAZE IN			Scale @ A3 1:1	
				Sheet 1 / 1

MULTIPOINT HANDLE "BC" IN CODE

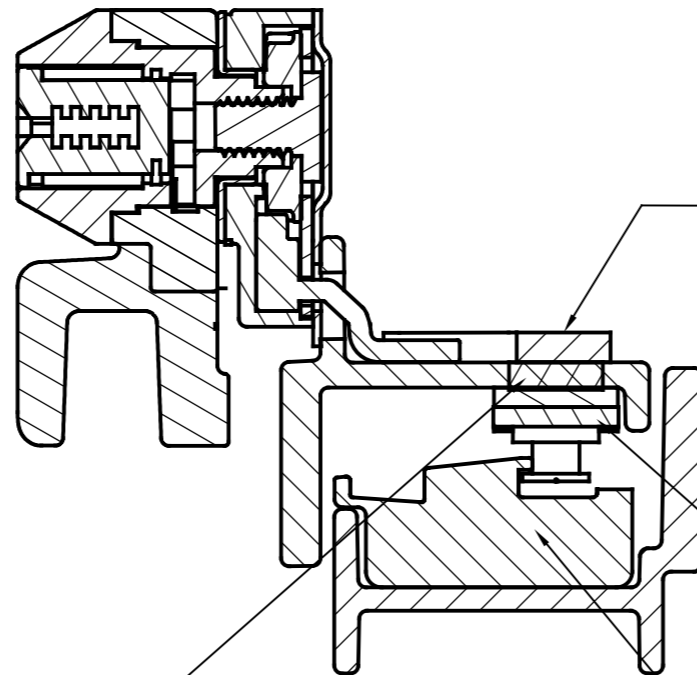
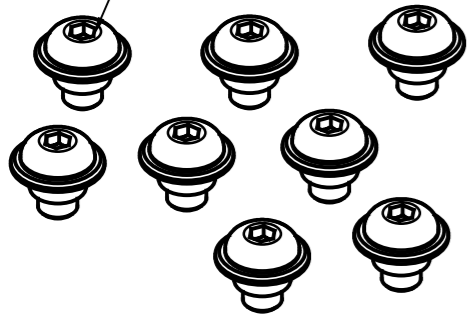


MP158SPC10** - MULTIPOINT HANDLE SPACER 1mm

MPRW20/24 - MULTIPOINT RAIL

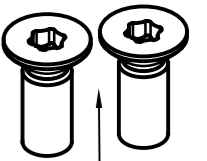
MPW40KP - KEEP (4)
OPTION - (MPW40KP05NA - KEEP PACKER)

MP05RETSTD - RETAINER AND SCREW



MPW40DP - DRIVE PLATE

M514CSKTX - M5 x 14mm TX25 COUNTERSINK SCREW
TO FIX CENTRE MUSHROOM



MPW40CM - CENTRE MUSHROOM ASSEMBLY

MPW40DPS - DRIVEPLATE SPACER
OPTION - (MPW40DPSS05 - DRIVE PLATE SPACER SHIM)

MPW40KPCM - CENTRE MUSHROOM KEEP (1)
OPTION - (MPW40KP05NA - KEEP PACKER)



Issue 1	Date 28/01/2020	Material	Finish
Designed By terry	Checked By	Part No.	
Description MW40 MULTIPOINT OPEN IN GLAZE OUT			Scale @ A3 1:1
			Sheet 1 / 1

